



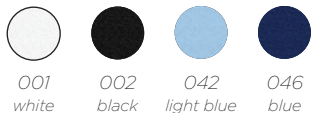
ZANETTI®
1965

elements

style:
ZA5600 EVA

fabric:
K20970
71% CO - 25% PA - 4% EA

colors:



*Cotton stretch
basic slim shirt*



SIZE RANGE

I	40	42	44	46	48	50	52
D	34	36	38	40	42	44	46
E	38	40	42	44	46	48	50
F	36	38	40	42	44	46	48
GB	8	10	12	14	16	18	20
USA	XS	S	M	L	XL	XXL	XXXL



style:
ZA5601 FRIDA
fabric:
K20990
98% CO - 2% EA

colors:



001
white



042
light blue



*No iron,
stretch oxford cotton,
comfort fit shirt*



SIZE RANGE

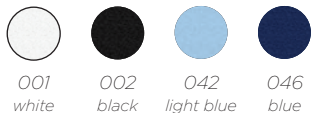
I	40	42	44	46	48
D	34	36	38	40	42
E	38	40	42	44	46
F	36	38	40	42	44
GB	8	10	12	14	16
USA	XS	S	M	L	XL



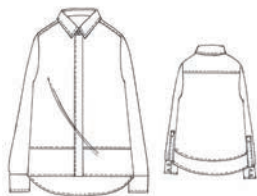
style:
ZA5602 BIANCA

fabric:
K20970
71% CO - 25% PA - 4% EA

colors:



*Cotton stretch
boxy shirt with
asymmetric cut*



SIZE RANGE

I	40	42	44	46	48	50	52
D	34	36	38	40	42	44	46
E	38	40	42	44	46	48	50
F	36	38	40	42	44	46	48
GB	8	10	12	14	16	18	20
USA	XS	S	M	L	XL	XXL	XXXL



style:
ZA5603 AMY

fabric:
Y30038
69% AC - 31% SE

colors:

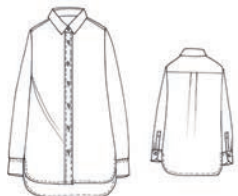


005
off white

002
black



*Loose,
washed mixed silk
Crêpe De Chine shirt*



SIZE RANGE

I	40	42	44	46	48	50	52
D	34	36	38	40	42	44	46
E	38	40	42	44	46	48	50
F	36	38	40	42	44	46	48
GB	8	10	12	14	16	18	20
USA	XS	S	M	L	XL	XXL	XXXL



style:
ZA5604 CLOE

fabric:
Y30038
69% AC - 31% SE

colors:



005
off white

002
black



*Loose,
washed mixed silk
Crêpe De Chine
two pocket shirt*



SIZE RANGE

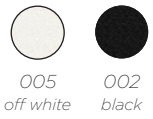
I	40	42	44	46	48	50
D	34	36	38	40	42	44
E	38	40	42	44	46	48
F	36	38	40	42	44	46
GB	8	10	12	14	16	18
USA	XS	S	M	L	XL	XXL



style:
ZB5605 ZOE

fabric:
Y30038
69% AC - 31% SE

colors:



*Loose mixed silk
Crêpe De Chine
blouse*



SIZE RANGE

I	40	42	44	46	48	50	52
D	34	36	38	40	42	44	46
E	38	40	42	44	46	48	50
F	36	38	40	42	44	46	48
GB	8	10	12	14	16	18	20
USA	XS	S	M	L	XL	XXL	XXXL



style:
Z15607 09 NICOLE

fabric:
CVM021
68% VI - 29% PC - 3% EA

colors:



002
black



047
dark blue



*Two pocket
cardigan knitted
viscose mix*



SIZE RANGE

I	42	44	46	48	50
D	36	38	40	42	44
E	40	42	44	46	48
F	38	40	42	44	46
GB	10	12	14	16	18
USA	S	M	L	XL	XXL



style:
ZS5608 09 HELEN

fabric:
CVM021
68% VI - 29% PC - 3% EA

colors:



002
black



047
dark blue



Round neck
two pocket pullover
knitted viscose mix



SIZE RANGE

I	42	44	46	48	50
D	36	38	40	42	44
E	40	42	44	46	48
F	38	40	42	44	46
GB	10	12	14	16	18
USA	S	M	L	XL	XXL



style:
ZS6063 09 TRACY

fabric:
M60091
95% VI - 5% EA

colors:



*Round neck jersey
viscose t-shirt*



SIZE RANGE

I	40	42	44	46	48	50	52
D	34	36	38	40	42	44	46
E	38	40	42	44	46	48	50
F	36	38	40	42	44	46	48
GB	8	10	12	14	16	18	20
USA	XS	S	M	L	XL	XXL	XXXL



style:
ZP5606 ROMY
fabric:
CD5018
90% PL - 10% EA

colors:



002
black

047
dark blue



*Bi-stretch
welt pocket pants*



SIZE RANGE

I	40	42	44	46	48	50	52
D	34	36	38	40	42	44	46
E	38	40	42	44	46	48	50
F	36	38	40	42	44	46	48
GB	8	10	12	14	16	18	20
USA	XS	S	M	L	XL	XXL	XXXL



style:
ZP5175 09 PENNY

fabric:
CJ2060
65% CO - 22% PL - 11% VI - 2% EA

colors:



046
blue



*Skinny high-waist
stretch washed
jeans*



SIZE RANGE

I	40	42	44	46	48	50	52
D	34	36	38	40	42	44	46
E	38	40	42	44	46	48	50
F	36	38	40	42	44	46	48
GB	8	10	12	14	16	18	20
USA	XS	S	M	L	XL	XXL	XXXL





ZANETTI MODA s.r.l.

Via Nazionale, 27 - 36040 - Grumolo delle Abbadesse (VI) - ITALY

Tel/Phone +39 (0) 444 414955 r.a. - Fax +39 (0) 444 381603

info@zanettimoda.it - www.zanettimoda1975.com